

2024



Audio Note (UK) Product Portfolio

AUDIO NOTE (UK) LTD Unit C, D & E Star Road, Star Trading Estate, Partridge Green, West
Sussex, RH13 8RA, United Kingdom

Contents

1. Contents Page
2. Introduction to Audio Note (UK)
3. Pre-Amplifiers & Phono Stages
4. Power Amplifiers - Mono
5. Power Amplifiers - Stereo
6. Integrated Amplifiers
7. Digital; CD Players, CD Transports & DACs
8. Analogue; Turn Tables, Tone Arms, Cartridges & Step Up Transformers
9. Loudspeakers
10. Loudspeakers
11. More Loudspeakers
12. Cables

Introduction to Audio Note (UK) Ltd

We are manufacturers of the finest domestic audio reproduction equipment money can buy, using the best available technology and the finest components.

We are the largest European manufacturer of ultra-performance valve-based audio equipment, with a worldwide distribution network.

We maintain a world-class standard of quality by keeping as many manufacturing processes in house, including winding our own transformers and foil capacitors.

Audio Note (UK) released its first integrated amplifier, the OTO PP, in 1991 and it is a testimony both to the amplifier's design and also to the company's longevity that it is still possible to buy the same model today, still built completely in their factory in Sussex, England, more than 33 years later.

While other manufacturers come and go, as do their products, Audio Note (UK) has stood the test of time and is now Europe's largest and most prestigious manufacturer of ultra performance valve-based home audio systems.

The company is one of the few to offer complete in-house designed and manufactured systems. From the tip of the cartridge on the turntable, through the cables and amplification, right through to the drive units in the loudspeakers, everything is designed and produced by Audio Note (UK) in their factories in the UK and Europe.

A vast range of different options is available to suit every music lover's requirements; there are over 150 separate and distinct products currently in the Audio Note (UK) catalogue. From cost effective solutions to full systems that truly redefine the limits of performance and ones expectations of sound quality.

As the company's motto says;

"Music's Finest Conductor"

Pre Amplifiers & Phono Stages



R Zero/II

M1		
Line	Phono	RIAA
M2		
Line	Phono	RIAA
Line Signature	Phono Signature	
Line Balanced	Phono Balanced	
M3		
Line	Phono	RIAA
Line Balanced CD Input	Phono Balanced CD Input	
M5		
Line	Phono	RIAA
Line Balanced CD Input	Phono Balanced CD Input	
M6		
Line	Phono	RIAA
Line Balanced CD Input	Phono Balanced CD Input	
Line Signature *with external PSU	Phono Signature *with external PSU	RIAA Signature *with external PSU
M8		
Line	Phono	RIAA
Line Balanced CD Input	Phono Balanced CD Input	
Line Signature *with external PSU	Phono Signature *with external PSU	RIAA Signature *with external PSU
M9		
Phono *with external PSU		RIAA *with external PSU
Phono Signature*with external PSU		RIAA Signature *with external PSU
M10		
Line *with external PSU ‘Galahad’		
Line Signature *with external PSU ‘Galahad Signature’		

Entry Level	Level One	Level Two	Level Three	Level Four	Level Five	Level Six
-------------	-----------	-----------	-------------	------------	------------	-----------

Power Amplifiers – Mono



Parallel Single Ended, Dual 2A3 per channel:

Empress		
Standard	Silver	Silver Signature
Neiro		
Kageki		
Standard	Balanced	

Single Ended, Single 300B per channel:

Quest		
Standard	Silver	Silver Signature
Shinri		
Standard		Balanced
Baransu		
Standard		Balanced

Parallel Single Ended, Dual 300B per channel:

Conquest		
Standard	Silver	Silver Signature
Kassai		
Standard		Balanced
Kegon		
Standard		Balanced

All above products are available in Low, Medium or High Gain

Parallel Single Ended, Dual 300B per channel:

P4 Tonmeister	
Balanced	



Parallel Single Ended, Dual 211/4242e per channel:

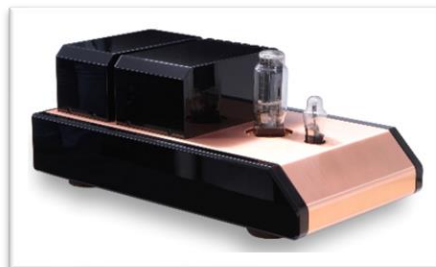
Ankoru
Ginrei
Gaku On

Single Ended, Single 211/4242e per channel:

Ongaku Shinguru

Single Ended, Bespoke Tube spec; has previously been made with 212/845E/2x 211/DA100:

The Legend



Entry Level	Level One	Level Two	Level Three	Level Four	Level Five	Level Six
-------------	-----------	-----------	-------------	------------	------------	-----------

Power Amplifiers – Stereo



Push Pull, 6005:

P1 PP

Push Pull, 6L6:

P2 PP



Parallel Single Ended, EL84:

P1 SE

P1 SE	
Standard	Signature

Parallel Single Ended, 6L6:

P2 SE

P2 SE	
Standard	Signature

Single Ended, 300B:

P3 Tonmeister

P3 Tonmeister		
Standard	Silver	Silver Signature

Single Ended, 300B:

Conqueror

Conqueror		
Standard	Silver	Silver Signature
<i>Available in Low, Medium or High Gain</i>		

Single Ended, 2A3:

Vindicator

Vindicator		
Standard	Silver	Silver Signature



Single Ended, 211:

Jinro Shochu
Tomei Kensei
Ongaku Kensei



Integrated Amplifiers



Push Pull ECL82:

I Zero

Push Pull EL34:

Cobra

Push Pull, 6005:

Oto PP
Line
Phono

Push Pull, 5881:

Soro PP
Line
Phono



Parallel Single Ended, EL84:

Oto SE
Line
Line Signature
Line Silver Signature
Phono
Phono Signature
Phono Silver Signature

Parallel Single Ended, 5881:

Soro SE
Line
Line Signature
Phono
Phono Signature

Single Ended, 300B/4300E:

Meishu Tonmeister
Line
Line Signature
Line Silver Signature
Phono
Phono Signature
Phono Silver Signature
Meishu Konzertmeister
Phono
Meishu Kapellmeister
Phono

Single Ended, 211:

Jinro
Tomei
Ongaku



Entry Level	Level One	Level Two	Level Three	Level Four	Level Five	Level Six
-------------	-----------	-----------	-------------	------------	------------	-----------

CD Players



CD Zero
CD1.1x
CD2.1x/II
CD3.1x/II
CD4.1x
CD5.1x



CD Transports

CDT Zero/II
CDT One/II
CDT Two/II
CDT Three
CDT Four
CDT Five
CDT Six
*with external PSU 'Sixth Force'



Digital to Analog Converters

DAC 0.1x		
DAC 1.1x/II		
Standard		Signature
DAC 2.1x		
Standard	/II Balanced	Signature
DAC 3.1x/II Balanced		
DAC 4.1x		
Balanced		Balanced Signature
DAC 5 Special		
DAC Signature		
Fifth Element		
*with external PSU ‘Fifth Force’		



Entry Level	Level One	Level Two	Level Three	Level Four	Level Five	Level Six
-------------	-----------	-----------	-------------	------------	------------	-----------

Turn Tables

TT One Deluxe			
With or without external PSU (Power Supply)			
TT Two Deluxe			
With or without external PSU (Power Supply)			
TT Three			
PSU 1	PSU 2	PSU 3	PSU 4
TT Three Reference *with external PSU			



Tone Arms

Arm One		
Arm Two		
Arm Three		
AN-1S (for TT Three Reference only)		
AN-V, 4 wire	AN-Vx, 4 wire	AN-SOGON, 4 wire
AN-V, 6 wire	AN-Vx, 6 wire	AN-SOGON, 6 wire



Cartridges

Moving Magnet:

IQ 1
IQ 2
IQ 3

Replacement Stylus are available for all MM cartridges. They are interchangeable, for easy upgrading.

Moving Coil:

IO I Blue
IO I Red
IO II
IO Gold
IO Ltd
<i>Available with or without additional PSU (Power Supply)</i>



Step Up Transformers

AN-S1			
Low		High	
AN-S2			
Low		High	
AN-S3			
Low	Low/Medium	Medium	High
AN-S4			
Low	Low/Medium	Medium	High
AN-S5			
Low	Low/Medium	Medium	High
AN-S8			
Low	Low/Medium	Medium	High
AN-S9			
Low	Low/Medium	Medium	High
Audio Note (UK) IO Cartridges are suited to Low impedance model only. If you/your customer needs Medium/High impedance, please supply the cartridge specifications with your order.			



Entry Level	Level One	Level Two	Level Three	Level Four	Level Five	Level Six
-------------	-----------	-----------	-------------	------------	------------	-----------

Speakers

Bookshelf Speakers:

AX One
AX Two

Floor Standing Speakers:

AZ Two Deluxe
Paper Cone
Hemp Cone

AX/AZ	Tweeter	Bass Driver	Sensitivity	Level
AX One	¾", silk/ polamide	5" paper	87dB	Entry
AX Two	¾", silk/ polamide	6.5" paper	89dB	Entry
AZ Two Deluxe	¾", silk/ polamide	8" paper or hemp	93dB	1

AN-K Speakers (suitable as bookshelf or with stands):

AN-K/D
AN-K/LX
AN-K/SPe
AN-K/SPx SE

AN-J Speakers (stands recommended):

AN-J/D
Paper Cone
Hemp Cone
AN-J/LX
Paper Cone
Hemp Cone
AN-J/SPe
Paper Cone
Hemp Cone
AN-J/SE Hemp
AN-J/SE Hemp SILVER
AN-J/SEC Hemp SILVER

AN-K	Tweeter	Bass Driver	Sensitivity (for 1W at 1m)	Cable	Cross-over	Inductors	Level
AN-K/D (Black Ash only)	¾" tweeter	8" standard, paper, copper voice coils	90dB	AN-D	Internal	Copper	1
AN-K/LX	¾" tweeter	8" standard, paper, copper voice coils	90dB	AN-Lexus	Internal	Copper	2
AN-K/SPe	¾" tweeter	8" standard, paper, copper voice coils	90dB	AN-SPe	Internal	Copper	3
AN-K/SPx SE	¾" tweeter	8" standard, paper, copper voice coils	90dB	AN-SPx	Internal	Silver	4

AN-J	Tweeter	Bass Driver	Sensitivity (for 1W at 1m)	Cable	Cross-over	Inductors	Level
AN-J/D (Black Ash only)	1" tweeter, standard magnet, copper voice coil	8" standard, paper, copper voice coils	93dB	AN-D	Internal	Copper	1
AN-J/D Hemp (Black Ash only)	1" tweeter, standard magnet, copper voice coil	8" standard, hemp, copper voice coils	93dB	AN-D	Internal	Copper	1
AN-J/LX	1" tweeter, standard magnet, copper voice coil	8" standard, paper, copper voice coils	93dB	AN-Lexus	Internal	Copper	2
AN-J/LX Hemp	1" tweeter, standard magnet, copper voice coil	8" standard, hemp, copper voice coils	93dB	AN-Lexus	Internal	Copper	2
AN-J/SPe	1" tweeter, standard magnet, copper voice coil	8" standard, paper, copper voice coils	93dB	AN-SPe	Internal	Copper	3
AN-J/SPe Hemp	1" tweeter, standard magnet, copper voice coil	8" standard, hemp, copper voice coils	93dB	AN-SPe	Internal	Copper	3
AN-J/SPe SE Hemp	1" tweeter, standard magnet, copper voice coil	8" standard, hemp, copper voice coils	93.5dB	AN-SPe	Internal	Silver	4
AN-J SE Hemp Silver	1" tweeter, standard magnet, copper voice coil	8" standard, hemp, copper voice coils	93.5dB	AN-SPx	Internal	Silver	4
AN-J SEC Hemp Silver	1" tweeter, AlNiCo magnet, silver voice coil	8" AlNiCo, hemp, silver voice coils	93.5dB	AN-Sogon	Internal	Silver	5

AN-E (stands recommended):

AN-E/D	
Paper Cone	Hemp Cone
AN-E/LX	
Paper Cone	Hemp Cone
AN-E/LX HE	
Hemp Cone	
AN-E/LX HE Signature	
Hemp Cone	
AN-E/SPe	
Paper Cone	Hemp Cone
AN-E/SPe HE	
Hemp Cone	

AN-E/SPe HE Signature
Hemp Cone. With external Crossovers
AN-E/LX AiNiCo
Hemp Cone
AN-E/SPx AiNiCo
Hemp Cone
AN-E/SOGON AiNiCo
Hemp Cone
AN-E/SPe HE SE Signature
Hemp Cone. With external Crossovers
AN-E/SPx HE SE Signature
Hemp Cone. With external Crossovers

AN-E LTD (Heavy stands recommended):

AN-E/SPx LTD
With external PSU
AN-E/SPx LTD Signature
With external PSU and external Crossovers
AN-E/SOGON LTD
With external PSU

AN-E/SOGON LTD Signature
With external PSU and external Crossovers
AN-E/SOGON LTD Signature
With external PSU
AN-E/SOOTTO LTD Silver Signature
With external PSU and external Crossovers



**Available in a range
of finishes**



AN-E	Tweeter	Bass Driver	Sensitivity (for 1W at 1m)	Cable	Cross-over	Inductors	Level
AN-E/D (Black Ash only)	1" tweeter, standard magnet, copper voice coil	8" standard, paper, copper voice coils	94dB	AN-D	Internal, custom caps	Copper	1
AN-E/D Hemp (Black Ash only)	1" tweeter, standard magnet, copper voice coil	8" standard, hemp, copper voice coils	94dB	AN-D	Internal, custom caps	Copper	1
AN-E/LX	1" tweeter, standard magnet, copper voice coil	8" standard, paper, copper voice coils	94dB	AN-Lexus	Internal, custom caps	Copper	2
AN-E/LX Hemp	1" tweeter, standard magnet, copper voice coil	8" standard, hemp, copper voice coils	94dB	AN-Lexus	Internal, custom caps	Copper	2
AN-E/LX HE	1" tweeter, standard magnet, silver voice coil	8" high efficiency, hemp, silver voice coils	97.5dB	AN-Lexus	Internal, custom caps	Copper	2
AN-E/SPe	1" tweeter, standard magnet, copper voice coil	8" standard, paper, copper voice coils	94dB	AN-SPe	Internal, custom caps	Copper	2
AN-E/SPe Hemp	1" tweeter, standard magnet, copper voice coil	8" standard, hemp, copper voice coils	94dB	AN-SPe	Internal, custom caps	Copper	3
AN-E/SPe HE	1" tweeter, standard magnet, silver voice coil	8" high efficiency, hemp, silver voice coils	97.5dB	AN-SPe	Internal, custom caps	Copper	3
AN-E/LX HE Signature	1" tweeter, standard magnet, silver voice coil	8" high efficiency, hemp, silver voice coils	98dB	AN-Lexus	External, AN Copper foil caps	Copper	2
AN-E/SPe HE Signature	1" tweeter, standard magnet, silver voice coil	8" high efficiency, hemp, silver voice coils	98dB	AN-SPe	External, AN Copper foil caps	Copper	3
AN-E/SPe HE SE Signature	1" tweeter, standard magnet, silver voice coil	8" high efficiency, hemp, silver voice coils	98dB	AN-SPe	External, AN Copper foil caps	Silver	4
AN-E/SPx HE SE Signature	1" tweeter, standard magnet, silver voice coil	8" high efficiency, hemp, silver voice coils	98dB	AN-SPx	External, AN Copper foil caps	Silver	4
AN-E/LX AlNiCo	1" tweeter, standard magnet, silver voice coil	8" AlNiCo, hemp, silver voice coils	95dB	AN-Lexus	Internal, custom caps	Copper	4
AN-E/SPx AlNiCo	1" tweeter, standard magnet, silver voice coil	8" AlNiCo, hemp, silver voice coils	95dB	AN-SPx	Internal, custom caps	Copper	4
AN-E/Sogon AlNiCo	1" tweeter, standard magnet, silver voice coil	8" AlNiCo, hemp, silver voice coils	95dB	AN-Sogon	Internal, custom caps	Copper	4
AN-E/SPx LTD	Field coil tweeter magnet	Field coil magnet	98dB	AN-SPx	Internal, custom caps	Copper	5
AN-E/SPx LTD Signature	Field coil tweeter magnet	Field coil magnet	98dB	AN-SPx	External, AN Copper foil caps	Copper	5
AN-E/Sogon LTD	Field coil tweeter magnet	Field coil magnet	98dB	AN-Sogon	Internal, custom caps	Copper	5
AN-E/Sogon LTD Signature	Field coil tweeter magnet	Field coil magnet	98dB	AN-Sogon	External, AN Copper foil caps	Copper	5
AN-E/Sogon LTD Silver Sig.	Field coil tweeter magnet	Field coil magnet	98dB	AN-Sogon	External, AN Silver foil caps	Silver	5
AN-E/Sootto LTD Silver Sig.	Field coil tweeter magnet	Field coil magnet	98dB	AN-Sootto	External, AN Silver foil caps	Silver	6

Mains Cables



Copper:

ISIS

Silver:

SOGON
SOOTTO

Interconnect Cables

Available in Digital or Stereo

Copper:

AN-A
AN-C
LEXUS
ISIS



Silver:

AN-S
AN-V
AN-Vx
PALLAS/II
White/Brown/Purple/Black
SOGON
SOOTTO

Speaker Cables

Available in Single-Wired or Bi-Wired

Copper:

AN-D
AN-Ba
AN-La
LEXUS LX
ISIS LX



Silver:

SPa
SPe
SPx
SOGON MINOR
SOGON LX
SOOTTO LX



Entry Level	Level One	Level Two	Level Three	Level Four	Level Five	Level Six
-------------	-----------	-----------	-------------	------------	------------	-----------